

Make it Snappery

Remote Snapshots with Samba and Snapper

David Disseldorp

ddiss@samba.org

Arvin Schnell

aschnell@suse.de



What is snapper?

- Tool to manage filesystem snapshots
- Supports Btrfs, ext4 and thin-provisioned LVM
- Creation
 - Manual
 - Timeline
 - Application triggered
- Automatic cleanup
- Command line tool and GUI

What is snapper?

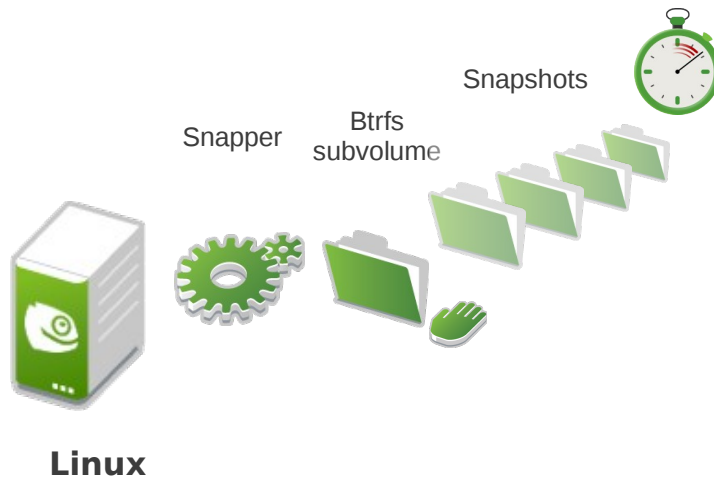
- One configuration per subvolume
- Metadata per snapshot:
 - Time and date
 - Description
 - Userdata (key-value pairs)
- Compare snapshots
- Revert file changes

D-Bus interface for snapper

- Snapper split into client and server
 - Started on demand by dbus-daemon
- Allows non-root users to work with snapshots
 - Access based on Unix user and group

Snapper Demo

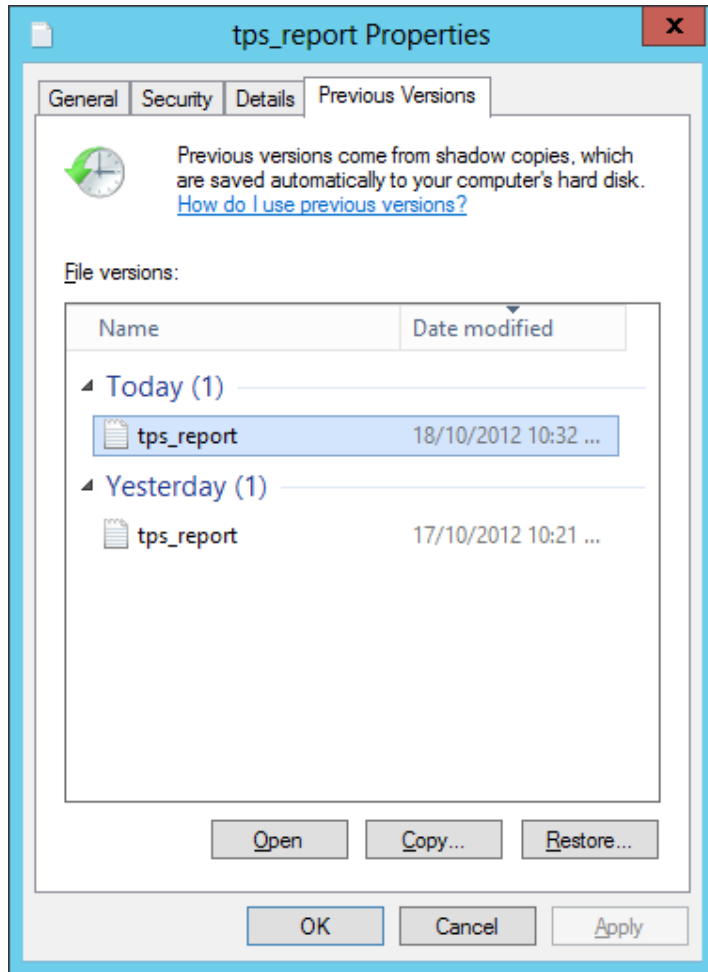
- Server = SLES11SP2



Benefits for Samba

- Previous versions in Explorer
- Remote management via File Server Remote VSS Protocol (FSRVP)

Previous Versions



- Client query via IOCTL
 - FSCTL_SRV_ENUM_SNAPS
 - @GMT token list response
 - Only displays versions with differing modification times
- Access using @GMT or timewarp token with path

File Share Shadow Copies

Introduction

- File Server Remote VSS Protocol
 - MS-FSRVP new with Windows Server 2012
 - DCE/RPC requests via `\pipe\FssagentRpc`
- Clients can manage shadow copies remotely
 - Determine which shares may be shadow copied
 - Request creation
 - Request exposure as a new share

File Share Shadow Copies

Windows

- Volume Shadow Copy Service (VSS) ecosystem
 - Application consistent shadow-copies for backup
 - VSS aware applications
 - Flush caches to disk prior to snapshot
- Microsoft File Server Shadow Copy Agent Service
 - diskshadow.exe
 - System Center Data Protection Manager (DPM)

File Share Shadow Copies

Samba FSRVP Server Implementation

- Fssd forked on start-up
 - Handles all FSRVP requests
- Snapshot requests propagated to VFS
 - Check whether path supports shadow copies
 - Asynchronous create/delete shadow copy requests
- Shadow copy shares defined in the registry
 - Clone of base share definition

File Share Shadow Copies

Samba FSRVP Server Implementation

- `vfs_snapper`
 - Manages snapshots via Snapper D-Bus interface
 - Presents snapshots as previous versions in Explorer
 - @GMT tokens mapped to snapshot paths
- `vfs_shell_snap`
 - Shell script hooks for snapshot creation and deletion
- `vfs_btrfs`
 - Raw Btrfs IOCTLS

FSRVP Server Demo

- Server = Samba with FSRVP changes
- Client = Windows Server 2012





Implementation State

Client and Server

- Client support and IDL upstream
- Potential improvements
 - DCE/RPC PDU double unmarshalling
 - Caching of snapper responses to avoid D-Bus round-trip
 - Asynchronous D-Bus requests
 - FSRVP state timeouts
 - Snapper support for read-write snapshots

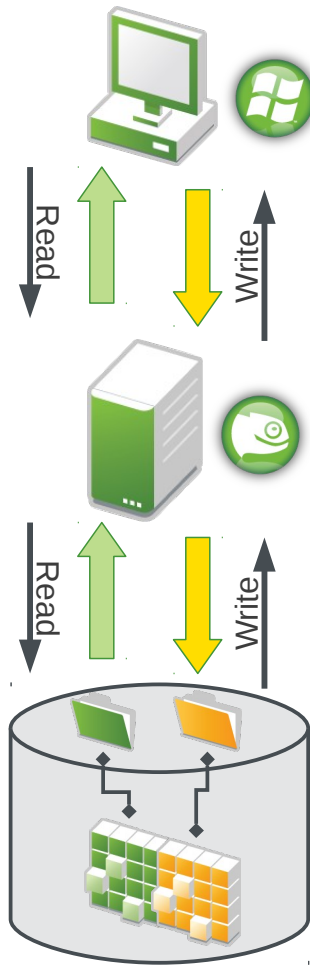
Implementation State

Test suite

- Selftest “faked” snapshots
 - `vfs_shell_snap` hooks for snapshot creation and deletion
 - Map to copy and delete
- Improved coverage
 - Snapshot enumeration FSCTL
 - FSRVP server and client

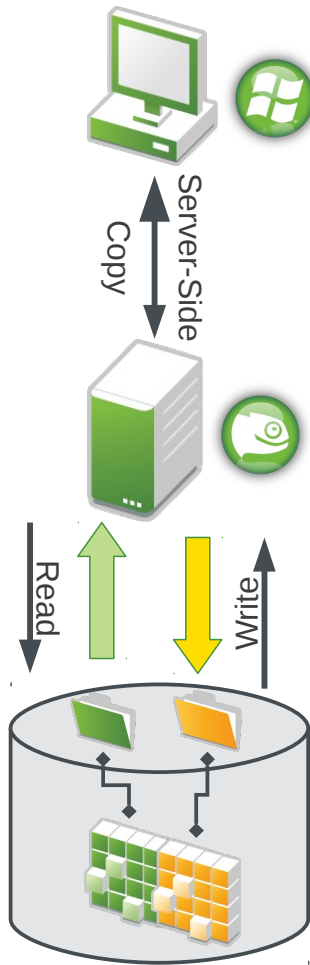


Traditional Copy



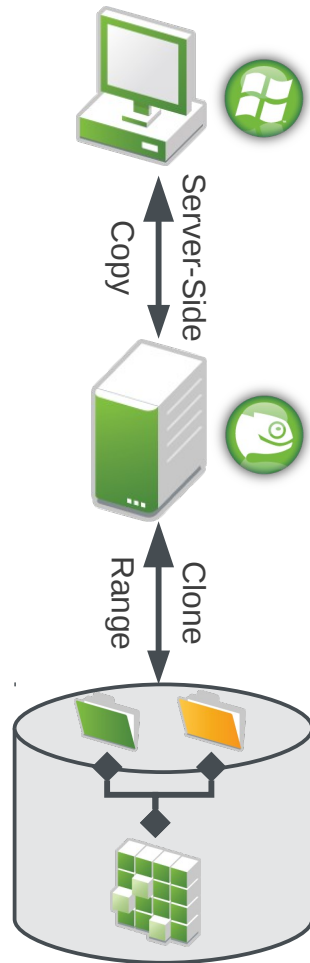
- File data takes disk and network round-trips
- Duplicate data stored on disk

Server-Side Copy



- Network round-trip avoided
- Server copies file data locally
- Duplicate data stored on disk

Btrfs Enhanced Server-Side Copy



- Data avoids network **and** disk round-trips
- No duplication of file data
- Ideal for hypervisor based workloads

Questions?

Code: <https://github.com/openSUSE/snapper>
<http://git.samba.org/?p=ddiss/samba.git>

Slides: <http://www.samba.org/~ddiss/>

Thank you.



References

- Demonstrated Samba code
 - [git://git.samba.org/ddiss/samba.git](https://git.samba.org/ddiss/samba.git) async_fsrvp_srv_wip_xp2013
- MS-FSRVP documentation
 - <http://msdn.microsoft.com/us-en/library/hh554852.aspx>
- SNIA SDC 2011 - Advancements in backup - Molly Brown
 - http://www.snia.org/sites/default/files2/SDC2011/presentations/tuesday/Molly_Brown_Advancements_In_Backup.pdf
- Btrfs Wiki
 - btrfs.wiki.kernel.org
- I Can't Believe This is Butter! A tour of btrfs by Avi Miller
 - <http://www.youtube.com/watch?v=hxWuaozpe2I>

References

- WS8 Beta Storage Availability White Paper
 - <http://download.microsoft.com/download/6/7/6/676CCB32-8ECC-4793-A698-68D0AFD2F1A9/WS8%20Beta%20Storage%20and%20Availability%20White%20Paper.pdf>
- Offline Deduplication for Btrfs
 - <http://thread.gmane.org/gmane.comp.file-systems.btrfs/8448>
- Snapper
 - <http://snapper.io/>



This document could include technical inaccuracies or typographical errors. Changes are periodically made to the information herein. These changes may be incorporated in new editions of this document. SUSE may make improvements in or changes to the software described in this document at any time.

Copyright © 2011 Novell, Inc. All rights reserved.

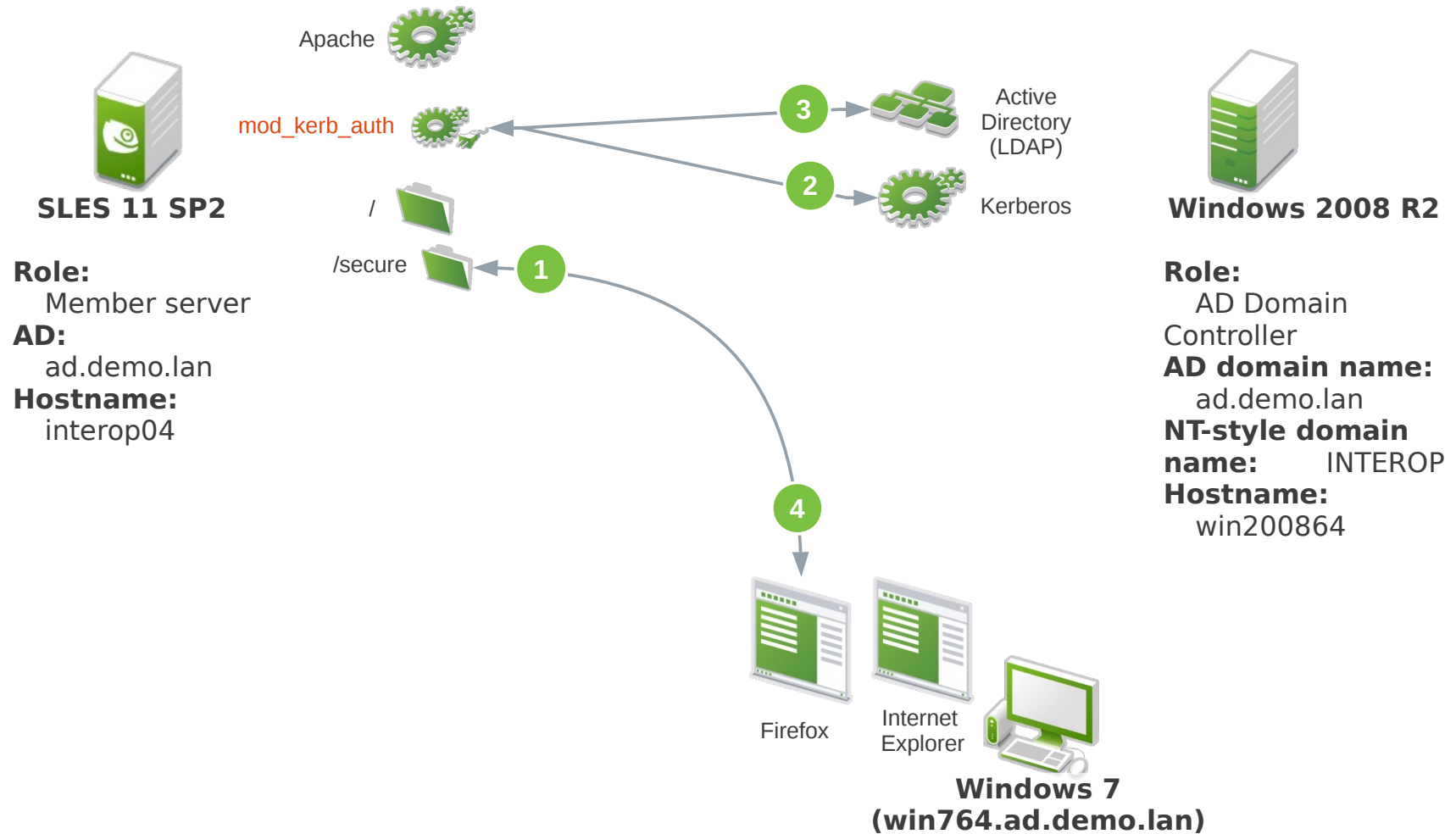
All SUSE marks referenced in this presentation are trademarks or registered trademarks of Novell, Inc. in the United States. All third-party trademarks are the property of their respective owners.



FSRVP Client Demo

- Server = Windows Server 2012
- Client = Samba rpcclient

Scenario 2: Integration of Apache with Active Directory



Prototype Samba implementation of “Recovery Point” Demo

- Automatic snapshots by Snapper
- Previous versions of “test.txt” in Explorer
- File “test.txt” is changed
- File “test.txt” is created

