



SAMBA

opening windows to a wider world

20 Years of Samba:

Measuring Up



SAMBA



EXPERIENCE

Copyright Notice

Presentation and slides are: Copyright (C) 2012 Software Conservancy, and are licensed under the [Creative Commons Attribution-Share Alike \(CC-By-SA\) 3.0 United States License](#)



Some images included herein are copyrighted by others. We claim use of these images as fair use under USA copyright law. However, please remove such images if you redistribute these slides under CC-By-SA-USA 3.0.

Imagine

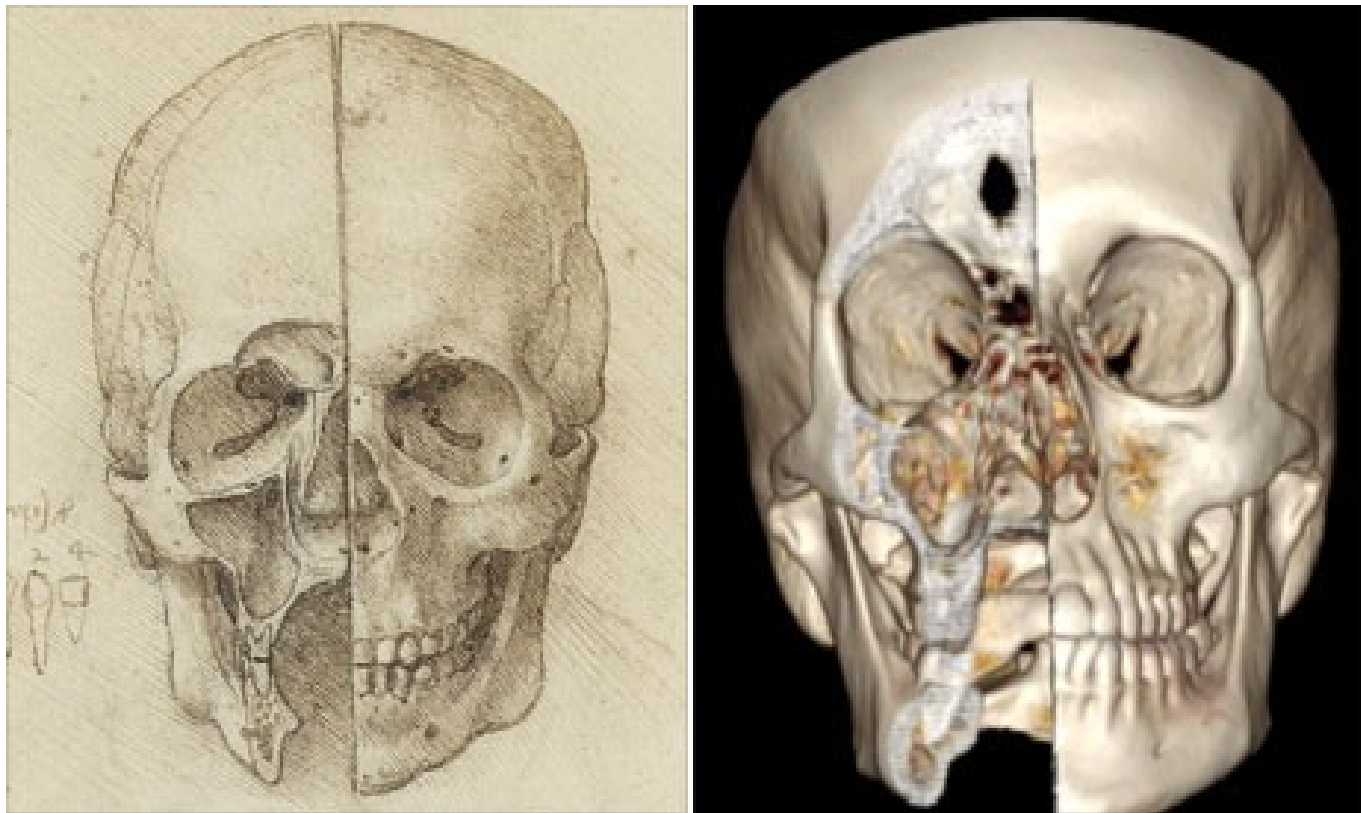
- A large box containing great treasure
- Inside are passage-ways that lead to more boxes, some lead to:
 - A dead-end
 - Pure pleasure
 - Other rewards
- You must find the keys understanding the value of Samba after 20 years – its all in the box.

Keys to Progress

- Curiosity
- Vision
- Dedication
- Passion
- Planning
- Execution
- Delivery
- Visionaries
- Mentors
- Contributors
- Investors
- Beneficiaries
 - Followers
 - Fellow Travelers
 - Admirers

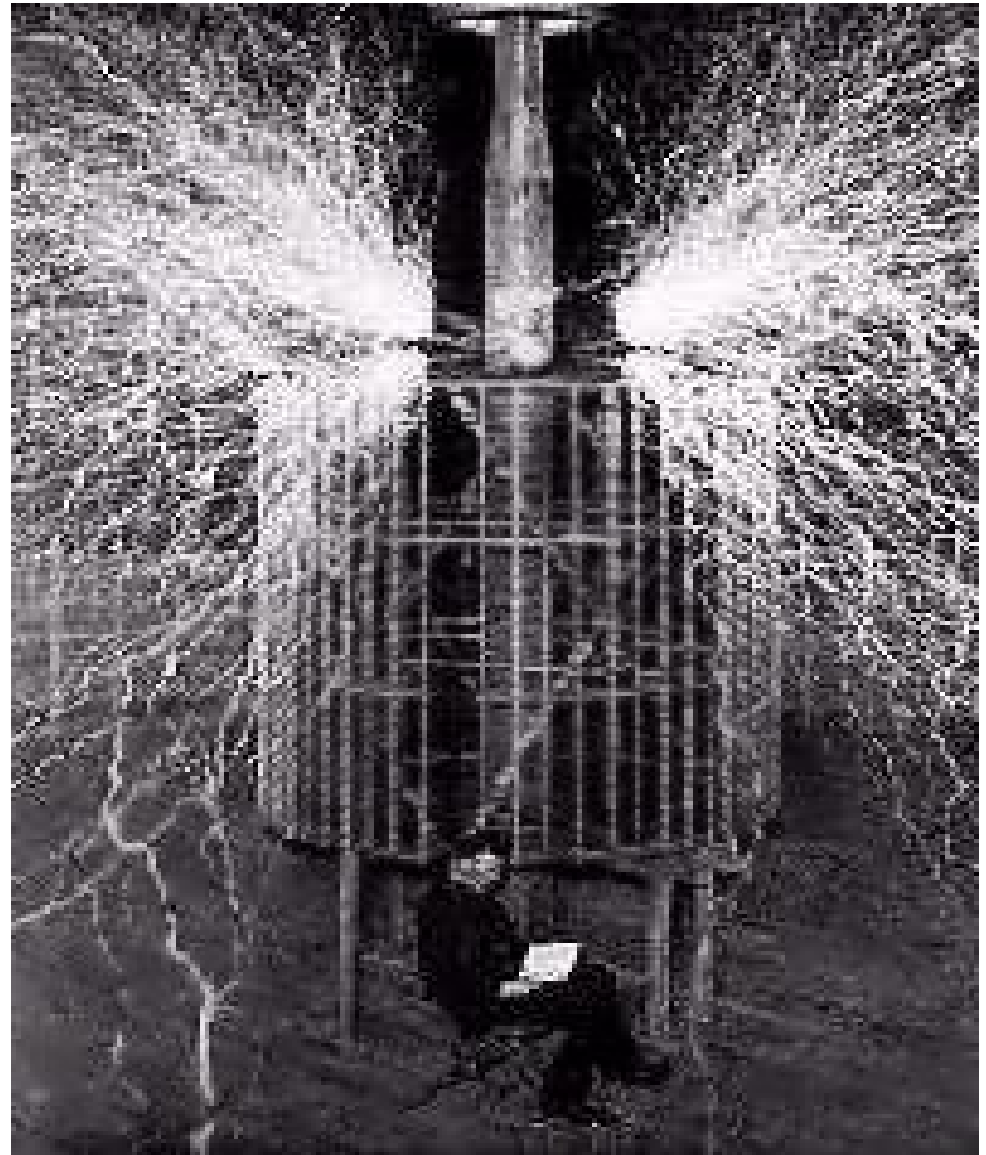
Curiosity

- Alone is useless unless followed by action



Vision

- Nikola Tesla visualized his designs. He could claim: “My AC generator works! I have had one running in my mind for many months and it has never failed!”



Dedication

- Guglielmo Marconi – inventor of long-distance radio and many related technologies



Passion

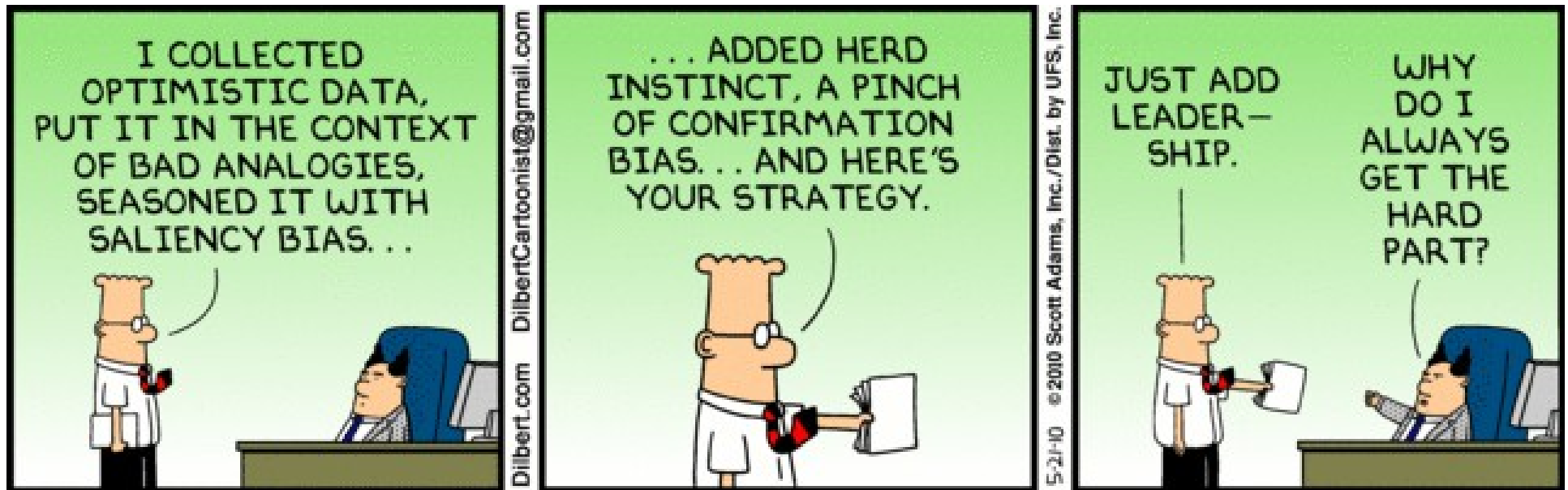
- Martin Luther King Jr., once said "If a man is called to be a street-sweeper, he should sweep streets even as Michelangelo painted, or Beethoven composed music, or Shakespeare wrote poetry. He should sweep streets so well that all the hosts of heaven and earth will pause to say, 'Here lived a great street-sweeper who did his job well.'"

Planning

- Planning is the psychological process of thinking about the activities required to create a desired goal or outcome.
- Little is achieved without thinking about a goal and how it can be achieved.
- Since it is human nature to fall short of our goals, it pays real dividends to set high goals. Those who achieve them are motivated to do even greater things.

Execution

- Is the process and discipline to direct activities so goals and objectives are achieved.
- Leadership and management.



Delivery

- Delivery is the process of meeting expectations on time.
- Quality is one dimension of delivery. When quality falls short, delivery is inadequate.



Baby skunk delivery

search ID: cga0247

Visionaries

- Visionaries motivate people to transform intangible opportunity into present reality.
- Visionaries inspire and enthuse those around them.
- Visionaries are powerhouses for the mind.

Mentors

- Mentors nurture relationships and help others to find direction in dark tunnels.
- Are leaders who work alongside their successors until maturity, then they move out of the way.



Contributors

- Often work in good old sweatshop conditions for the benefit of others.
- Are under-rewarded and under recognized.



Investors

- Provide resources to enable contribution.
- Provide proof of concept, testing and validation opportunities.
- May donate funding.
 - Includes sponsors

Followers

- The quiet majority
- Use and enjoy
- Occasionally abuse
 - And when they can be of great help to an open source project
 - Provide new insight into use cases!
 - Expand the barriers of product capability

Fellow Travelers

- Integrate Open Source code and applications into an Operating System platform.
- May act as:
 - Investors
 - Contributors
- May hire away from an Open Source project the brightest and the best of contributors.
- May hire key talent to work full time on project.

Admirers

- Admirers can be found anywhere
- Key differentiation point is level of commitment
 - Admirers have little “skin-in-the-game”
 - They see “some benefits” in a project
 - May disappear when the tide flows out!

Who benefits from Samba

- Code contributors
- Code users
 - Individuals
 - Corporations
 - Integrators
 - Others

The Future

- What is the future of Samba?
 - The Project
 - Its Individuals
 - Its users
 - Corporate beneficiaries

Its up to you!

What is your desire?
How can the Samba Team serve you?