

# Active Directory For Your Breast Pocket

## Mobile Networks For Mobile Workgroups

Kai Blin

Samba Team

SambaXP 2010, May 7th

# Outline

## 1 Introduction

- Why Do This?
- Hardware
- Software

## 2 Building it

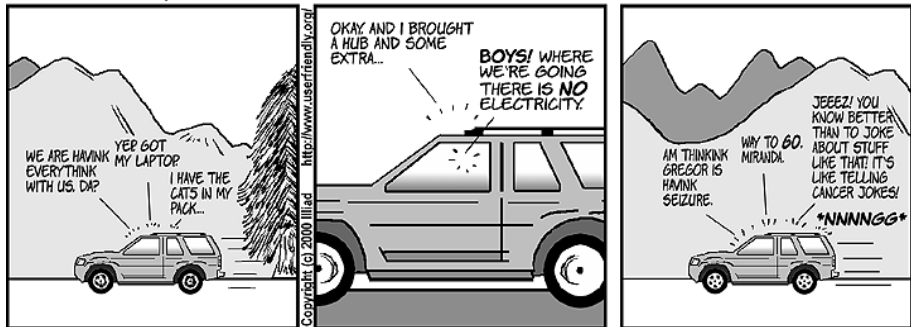
- Android
- Maemo
- Generic Crossbuilds
- Native Builds

## 3 Demo & Benchmarks

- WinXP
- Win7
- Win2k8
- Benchmarks

# Mobile Workgroup

USER FRIENDLY by Illiad



## Other Uses

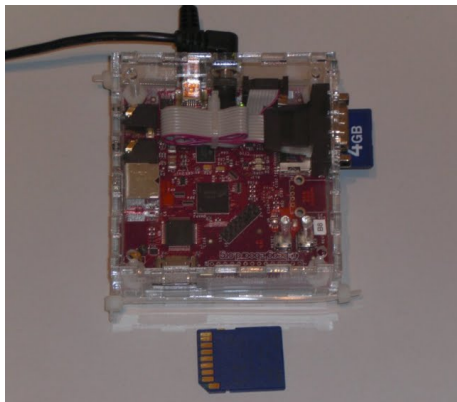
- RODC server for branch offices
- SOHO Servers
- Management appliances

# ARM

- 32bit RISC architecture
- Low power, low cost
- Widely used in consumer electronics
  - Smartphones/PDAs
  - Handheld gaming consoles
  - Routers/NAS boxes
  - Netbooks/Internet tablets

# Beagle

- 8cm x 8cm
- 128/256 MB RAM
- 500 mA / 5 V
- 500MHz ARMv7
- SD/MMC/SDIO slot
- Serial port
- **No** ethernet



# Phones

- 11cm x 6cm
- 288 MB RAM
- 528MHz ARM
- MicroSD
- WiFi



# Linux

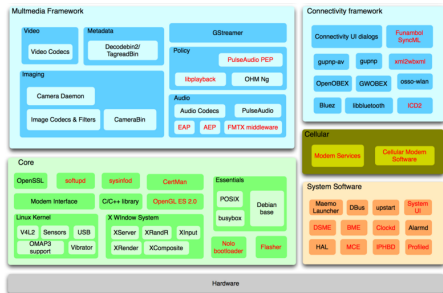
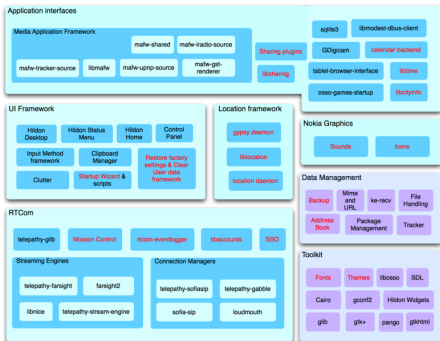
- Ubuntu 9.04 (ARMe1)
- Debian
- Angstrom



# Android



## Maemo



SAMBAA

[http://wiki.maemo.org/Documentation/Maemo\\_5\\_Developer\\_Guide/Architecture/Top\\_Level\\_Architecture](http://wiki.maemo.org/Documentation/Maemo_5_Developer_Guide/Architecture/Top_Level_Architecture),  
May 2005, 2010

SAMBAA

# Building for Android

- Grab repo
- Fetch native development kit (NDK) (go get a coffee...)
- Build the NDK (go have lunch, a walk and cake...)
- Cross-build your project

# Challenges on Android

- Android is not a Linux OS
- Hard to get community support

# Building for Maemo

- Grab Scratchbox2
- Make sure app compiles for x86
- Cross-build for ARMel

# Challenges on Maemo

- No working simulator available
- Build tools only work on 32bit
- Less devices supported

# Crossbuilds Using Waf

- Uses the current S4 build system
- Cross-configure currently hits simulator bug
- Likely the way to go in future
- Can possibly be made to use embedded SDKs

# Native Builds

- Easy on "real" Linux
- Requires dev env on embedded system
- Samba4 builds in ca. 2 hours



# Demo

Join XP machine to S4



# Demo

Join Win7 machine to S4



# Demo

Join Win2k8R2 DC to S4



# Power Consumption

System	Idle(W)	Load(W)
AMD Athlon64 3000+	75	105
Intel Core2 Quad	109	180
Mac Mini G4	20	40
ThinkPad R52	27	50
Beagleboard	4	7
ShevaPlug	6	9

# Benchmark

<b>Test (cycles/minute)</b>	<b>Win2003(VM)</b>	<b>S4 (VM)</b>	<b>S4 (Beagleboard)</b>
kinit – kdestroy	510	1430	100
join – leave	70	90	10
user add – delete	90	110	12
group add – delete	90	160	22
LDAP search (idx)	70	120	40
LDAP search (wc)	200	340	100
LDAP search (i. idx)	220	360	100

# Summary

- Suitable for small setups
- Slow operations not done often
- Affordable Active Directory setup (no license costs)
- Some optimization might help
- Building Samba4 with busybox worth a try

Thank you

Questions?

