

Client Side Samba

Linux Clients in Microsoft Windows Environments

Ralf Haferkamp

OpenLDAP Team

Lars Müller

Samba Team

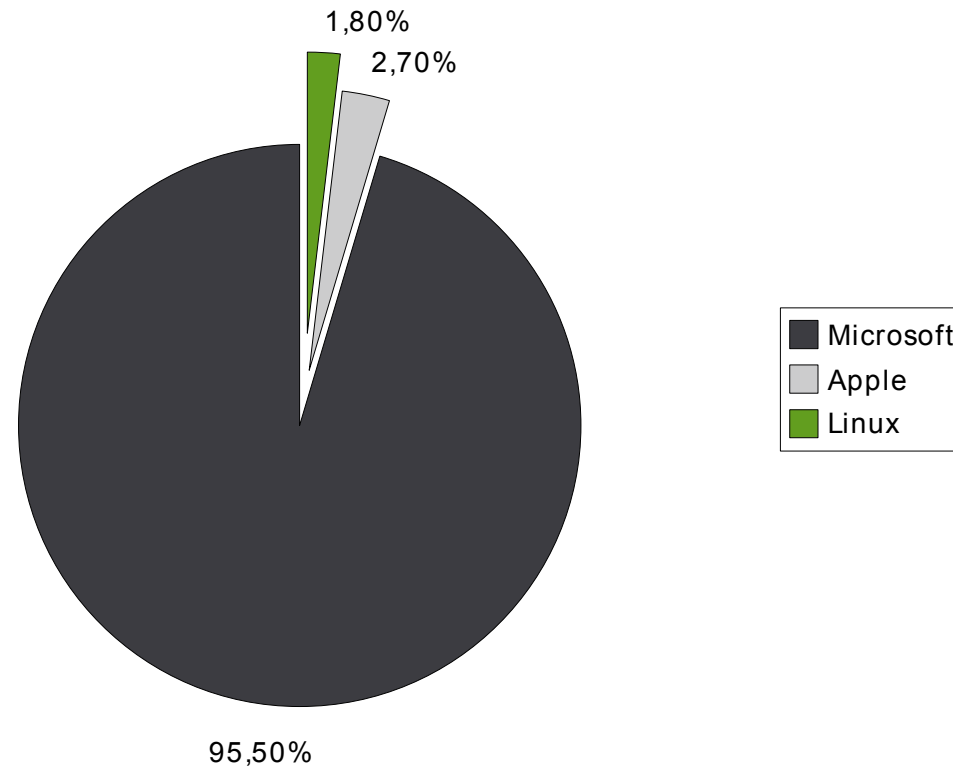
May 8, 2006



Novell®

Motivation

Operating Systems Market Share (Client and Serv



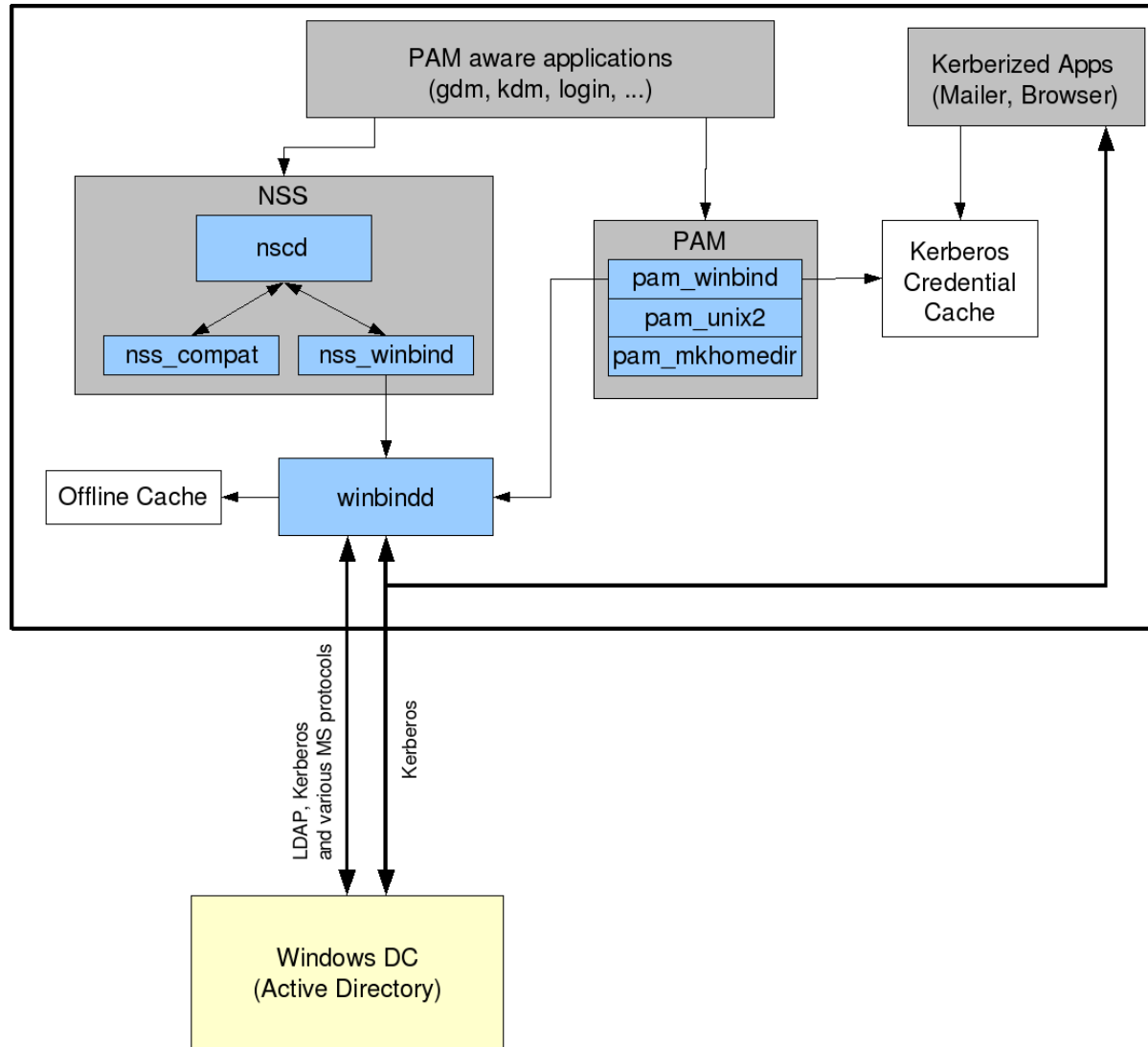
Mandatory Requirements Overview

- Domain join
- Single Sign On Authentication
- Name Service Switch (NSS)
- X11 Display Manager integration (KDM, GDM)

Mandatory Requirement Authentication^N

- Seamless PAM Integration
 - Let PAM winbind behave like other PAM modules
 - Mapping Microsoft to PAM error messages and codes
- Kerberized PAM Winbind
 - Automatic ticket refresh and renew
- Account Policies
 - Password
 - Logon hours
 - Lockout

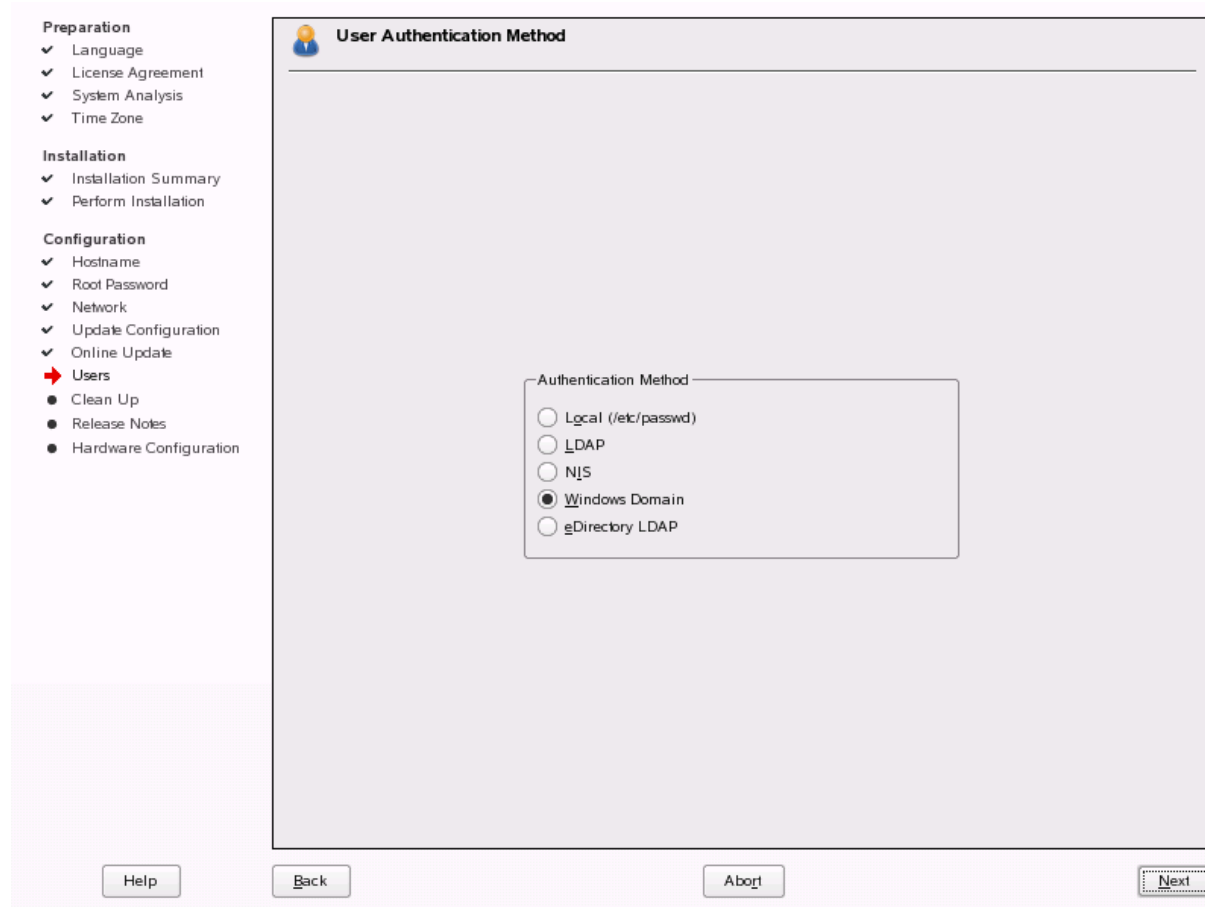
Architecture Overview



Supplementary Requirements

- Winbind Offline mode
- Kerberized Client Applications
 - web browsers (konqueror, FireFox)
 - MUA (KMail)
- File Access
 - libsmbclient using apps (konqueror, nautilus)
 - CIFS system wide?
- Printing

YaST Integration (1)



YaST Integration (2)

The screenshot shows the 'Windows Domain Membership' configuration window in YaST. On the left is a help sidebar, and on the right is the main configuration area with 'Membership' and 'Sharing by Users' sections. At the bottom are 'Back', 'Abort', and 'Next' buttons.

Selecting Windows Domain Membership

Specify the name of the NT or Active Directory domain. **Browse** presents the list of all domains found in the network.

When you press **Next**, the system verifies the domain and allows this host to join the domain.

Check **Create Home Directory on Login** to have home directories created on the first login.

Offline Authentication enables the user to log in even if there is no connection to the domain controller. For this option to work, you must log in to your domain at least once. The user's credentials are then stored encrypted on your computer and are reused for a domain login when no connection to the domain controller can be established. This is especially useful for mobile users.

Allow Users to Share Their Directories enables members of the group in

Windows Domain Membership

Membership

Domain
SAMBAXP-DEMO

Create Home Directory on Login

Offline Authentication

Sharing by Users

Allow Users to Share Their Directories

Permitted Group
users

Maximum Number of Shares
100

Samba Winbind AD Integration Demo

To do

- Accessing CIFS Home Directory
- Machine Account Password Changes
- Localisation
- GUI integration for Services For UNIX (SFU)
- Group Policy Support (GPO)
- Roaming Profiles
- Logon Scripts

Available Resources

- SUSE Linux Enterprise Desktop 10
- <http://openSUSE.org/Samba>
- Samba.org samba-docs subversion

Questions & Answers

?

Novell®

Unpublished Work of Novell, Inc. All Rights Reserved.

This work is an unpublished work and contains confidential, proprietary, and trade secret information of Novell, Inc. Access to this work is restricted to Novell employees who have a need to know to perform tasks within the scope of their assignments. No part of this work may be practiced, performed, copied, distributed, revised, modified, translated, abridged, condensed, expanded, collected, or adapted without the prior written consent of Novell, Inc. Any use or exploitation of this work without authorization could subject the perpetrator to criminal and civil liability.

General Disclaimer

This document is not to be construed as a promise by any participating company to develop, deliver, or market a product. Novell, Inc., makes no representations or warranties with respect to the contents of this document, and specifically disclaims any express or implied warranties of merchantability or fitness for any particular purpose. Further, Novell, Inc., reserves the right to revise this document and to make changes to its content, at any time, without obligation to notify any person or entity of such revisions or changes. All Novell marks referenced in this presentation are trademarks or registered trademarks of Novell, Inc. in the United States and other countries. All third-party trademarks are the property of their respective owners.

